

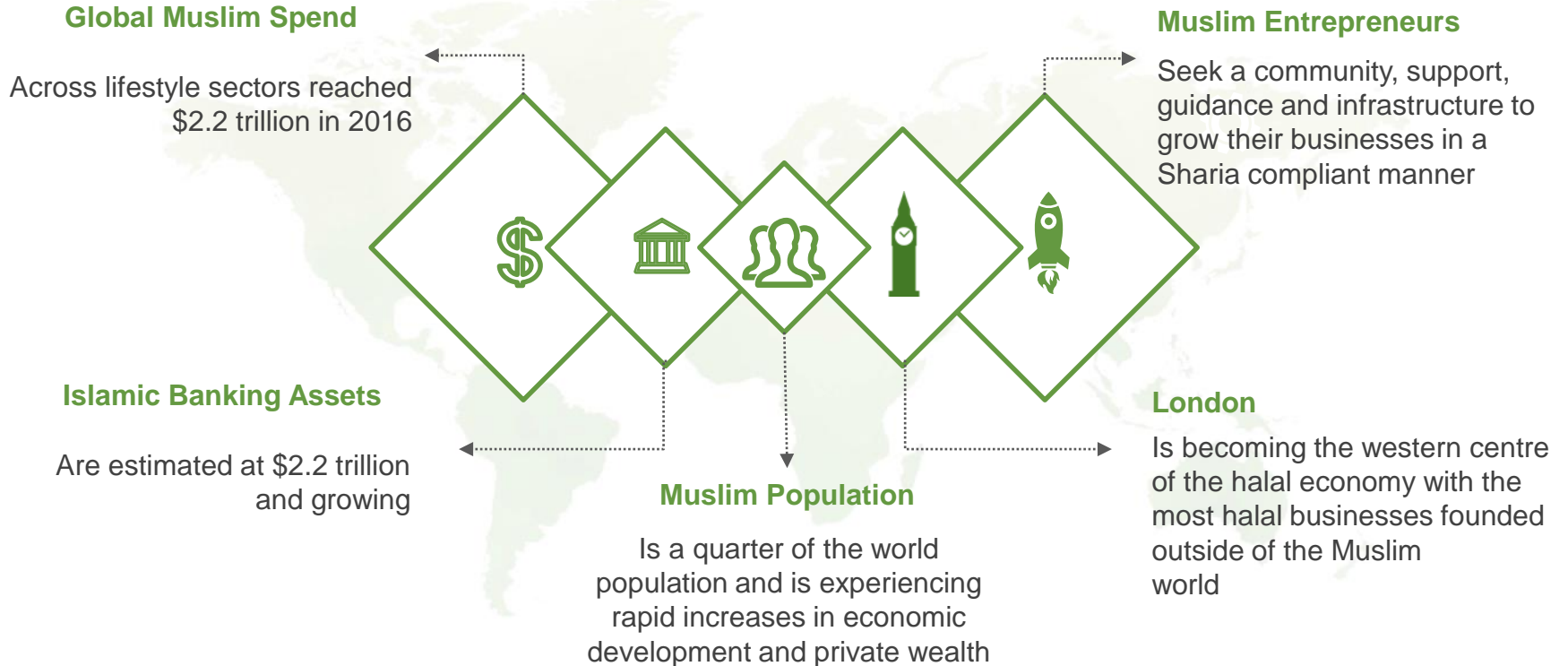


The Islamic Economy Accelerator in the UK

Q3 2018

Global Islamic Economy

A burgeoning market driven by entrepreneurship



The Islamic Economic Model

Islamic banking is not the only component

Islamic finance today:

- Predominantly banking assets
- Debt-based
- Fractional reserve banking model
- Reverse engineered
- Maqasid al Shari'a?



Islamic finance tomorrow:

- Banking and insurance
- Asset management
- Private equity and venture capital
- Waqf
- Zakat
- Sadaqa
- Social impact and green investment



The UK's Islamic Economy Accelerator

iE⁵ is the community space that supports halal economy businesses, especially digital, in the heart of London



Co-Working Space

Flexible mixed use space for all stages of businesses



Acceleration for Startups

Proximity to professional advisors made available through a programme of available advice and support



Corporate Innovation

Corporate innovation units, challenges and incubation programmes to develop disruptive next generation businesses



Global Connectivity

Connection to the global Islamic economy through affiliations with other hubs and ecosystems



Islamic Economy Sectors

iE5 is designed for businesses operating in the Islamic economy sectors



Halal Food



Islamic Finance
& FinTech



Modest Fashion
& Lifestyle



Halal Travel



Halal Pharmaceuticals
& Cosmetics

Community

iE⁵ is designed for the Islamic economy community and more



Islamic Economy

Businesses whose activities are wholly Shari'a compliant in nature

Ethical

Businesses with an ethical or sustainability objective

Social Impact

Businesses with an social impact or philanthropic objective

Programme

iE⁵ membership provides access to a programme developed for all stages of business growth

Space

A selection of space to suit every business need, co-working, breakout, hot desks and offices. In addition space to host meetings and events will be available for hire

Suppliers

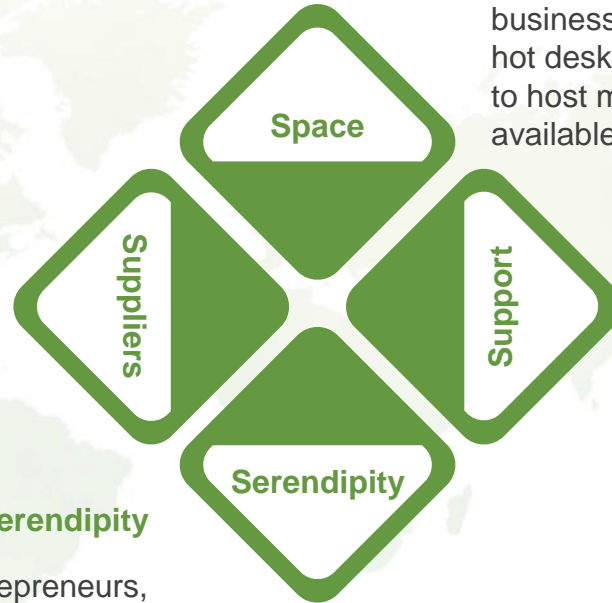
Negotiated preferential rates with third party suppliers for support and technical services

Serendipity

Networking with fellow entrepreneurs, investors and industry specialists

Support

Free master classes, workshops, Clinics, events and entrepreneurs in residence to support all aspects of business scaling





Support

iE5 makes available a range of services to support companies through the scaling lifecycle as needed. The halal economy needs mentoring, guidance, connectivity and lobbying power.



Master
Classes



Technical
Surgeries / Clinics



Entrepreneurs in
Residence



Shari'a Compliance
Support



Office Hours
with Experts



Fundraising
Support



International Scaling
Support



Partner
Discounts



Concept

A world class co-working space for the Islamic economy business operating in or expanding to the UK



Partnership Opportunities

Available Opportunities to Partner with iE⁵

Patron	Programme Sponsor	Corporate / Hub Member
Benevolent Grant	Sponsor an Innovation Programme	Access the Community
Receive credit as a Patron supporter on all collateral	Opportunity to design areas for innovation programme	Space for innovation / outreach team as needed
Branded as patron within the accelerator	Dedicated support to execute programme	Run events within the facilities
Early access to start-ups raising funding	Provide mentorship to startups	Opportunity to co-author research

Co-Working Space

A dedicated mixed use location in central London



Sample space available in London E1

Space:

- ~125 seat venue (circa 5,000 sq. ft.)
- Split into:
 - Co-working
 - Hot desk
 - Dedicated offices
 - Meeting / events space

Strategic Partners

iE⁵ has Islamic economy and innovation community specialist delivery partners



Gateway is a global multidisciplinary professional services firm, exclusively and wholeheartedly devoted to the Islamic economy and its underlying principles.

Its partners and consultants are senior Islamic economy professionals, many of whom are recognised throughout the world and have extensive experience in law, banking, finance, management consultancy, private equity, accountancy, financial technology, and regulation.



Elipses is a digital research, advisory and investment firm. Its partners are experts in developing innovation ecosystems, having built and run large blue chip corporate innovation programmes, founded and scaled start-ups to exit and developed and run industry communities focused on innovation.

Elipses clients are at the forefront of digital innovation, developing the next generation of digital businesses, in the Islamic, crypto and conventional economies.

Strategic Advisors



Ashley Freeman
CEO & Partner
Gateway



Harris Irfan
Partner
Gateway



Abdul Haseeb Basit
Co-Founder & Principal
Elipses



Lawrence Wintermeyer
Co-Founder & Principal
Elipses



Sherif Hampton
Deputy CEO & Partner
Gateway



Suhail Ahmad
Partner
Gateway

Founding Membership

iE5's founding members are leading lights from the Islamic economy in the UK and beyond



InsureHalal



Connecting growing companies with trusted advice.



Inspiring Knowledge



Primary Finance LTD



INVEST. GROW. YIELD



IslamicMarkets



Socially Responsible Investing



CORDOBA CAPITAL



Connecting UK MENA Tech

